

HONGPU GONIOPHOTOMETERS SYSTEM TEST REPORT

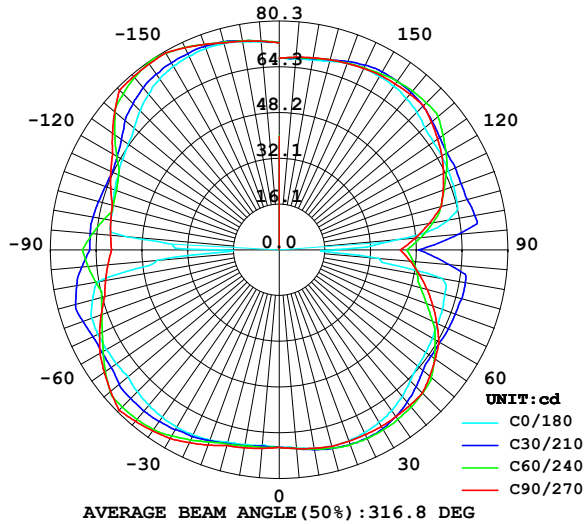
LUMINAIRE PHOTOMETRIC TEST REPORT

Report number:

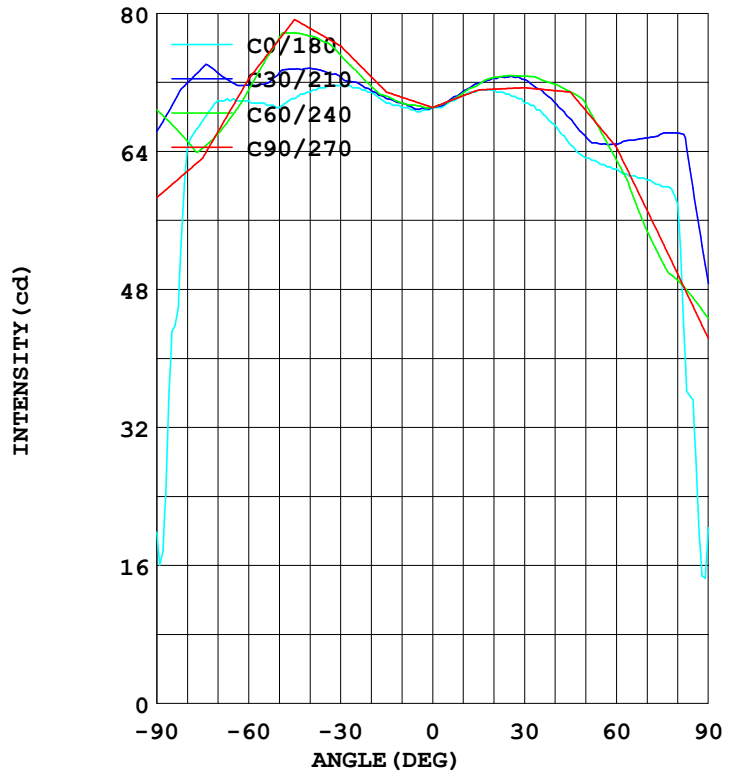
MANUFACTURER:	Address:	
NAME: 500450	TYPE:	WEIGHT:
SPECIFICATION:	DIMENSION:	SERIAL No.:

DATA OF LAMP		Imax(cd)	80.63	S/MH(C0/180)	1.57
MODEL		EFFICIENCY(%)	100.0	S/MH(C90/270)	1.71
NOMINAL POWER(W)	9	TOTAL FLUX(lm)	841.50	Voltage(V)	220.1
RATED VOLTAGE(V)	220	EFFICIENCY(lm/W)	97.8	Current(A)	0.071
NOMINAL FLUX(lm)	841.5	η up(%)	50.0	Power(W)	8.600
LAMPS QUANTITY	1	η down(%)	50.0	Power Factor(PF)	0.545
TEST VOLTAGE(V)	220.2	Effective Flux(lm)	841.5	EEI	0.129

LUMINOUS INTENSITY DISTRIBUTION



LUMINOUS INTENSITY DISTRIBUTION



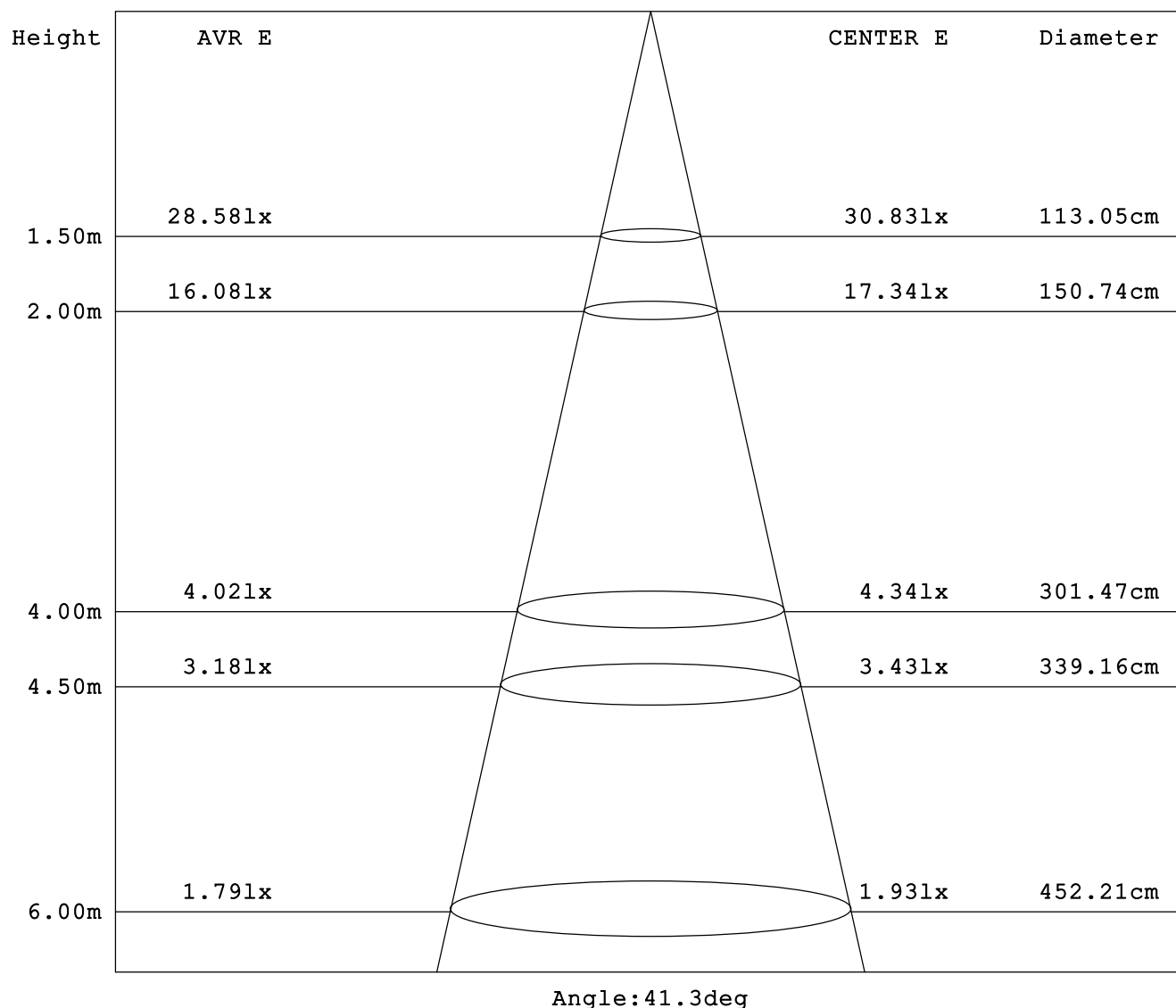
Test System:HOPOO HPG1900
 Temperature:25.3DEG
 Operators:
 Test Date:2022年03月26日

Test Set: 10.0deg/s B-Beta (TYPE B)
 Humidity:65.0%
 Test Distance:16.000 m
 Remarks:

AVERAGE AND CENTER E Figure

Report number:

MANUFACTURER:	Address:	
NAME: 500450	TYPE:	WEIGHT:
SPECIFICATION:	DIMENSION:	SERIAL No.:



Test System: HOPOO HPG1900
Temperature: 25.3DEG
Operators:
Test Date: 2022年03月26日

Test Set: 10.0deg/s B-Beta (TYPE B)
Humidity: 65.0%
Test Distance: 16.000 m
Remarks:

HONGPU GONIOPHOTOMETERS SYSTEM TEST REPORT

ZONAL FLUX DIAGRAM

Report number:

MANUFACTURER:	Address:	
NAME: 500450	TYPE:	WEIGHT:
SPECIFICATION:	DIMENSION:	SERIAL No.:

γ	C0	C45	C90	C135	C180	C225	C270	C315	γ	Φ zone	Φ total
5.0	68.86	69.37	69.97	69.93	69.88	70.02	70.05	69.46	0- 5	1.662	1.662
10.0	69.37	69.97	70.57	71.12	70.65	71.12	70.74	70.09	5- 10	5.018	6.681
15.0	69.88	70.51	71.16	72.07	71.42	72.34	71.42	70.88	10- 15	8.410	15.09
20.0	71.16	71.36	72.95	73.13	71.42	73.13	71.50	71.61	15- 20	11.81	26.90
25.0	71.68	72.88	74.75	74.24	70.91	73.22	71.59	72.20	20- 25	15.19	42.10
30.0	71.93	74.62	76.54	74.85	69.88	72.84	71.68	72.91	25- 30	18.48	60.59
35.0	71.68	75.93	77.56	75.10	69.12	72.19	71.50	73.15	30- 35	21.60	82.20
40.0	71.16	76.79	78.59	75.02	67.32	71.05	71.33	73.34	35- 40	24.44	106.6
45.0	70.40	76.19	79.61	73.81	65.02	69.59	71.16	72.22	40- 45	26.96	133.6
50.0	69.37	75.29	77.31	72.61	63.48	68.04	69.03	70.93	45- 50	29.03	162.6
55.0	69.88	73.95	75.00	71.00	62.72	66.27	66.90	69.44	50- 55	30.53	193.1
60.0	70.14	71.89	72.70	68.03	62.20	64.68	64.76	67.89	55- 60	31.72	224.9
65.0	70.40	71.04	69.63	66.29	61.43	63.92	61.09	67.58	60- 65	32.62	257.5
70.0	70.14	71.50	66.55	66.38	60.92	64.27	57.42	68.32	65- 70	33.26	290.8
75.0	67.83	72.33	63.48	68.28	60.16	65.07	53.75	69.36	70- 75	33.70	324.5
80.0	64.51	72.90	61.95	69.97	58.11	64.92	50.00	68.66	75- 80	33.83	358.3
85.0	43.26	72.37	60.41	68.71	35.32	57.16	46.25	59.94	80- 85	32.57	390.9
90.0	19.96	71.68	58.88	67.32	20.48	49.15	42.49	50.94	85- 90	29.91	420.8
95.0	53.75	69.72	59.47	69.67	41.72	57.88	47.95	55.58	90- 95	30.61	451.4
100.0	59.90	67.65	60.07	71.88	60.16	66.36	53.41	59.85	95-100	32.81	484.2
105.0	60.67	66.11	60.67	71.17	64.51	66.61	58.88	60.07	100-105	33.19	517.4
110.0	61.43	64.84	62.97	69.87	65.27	65.76	61.26	59.83	105-110	32.90	550.3
115.0	62.46	64.99	65.27	69.95	65.53	66.27	63.65	60.55	110-115	32.46	582.8
120.0	63.48	66.78	67.58	72.08	66.04	68.18	66.04	62.65	115-120	31.99	614.8
125.0	64.76	69.81	71.50	75.26	66.04	70.84	67.92	65.48	120-125	31.35	646.1
130.0	66.55	72.68	75.43	76.83	66.81	71.72	69.80	67.64	125-130	30.48	676.6
135.0	69.12	75.36	79.36	78.38	68.35	72.52	71.68	69.66	130-135	29.23	705.8
140.0	71.42	77.87	79.53	79.53	69.37	72.94	71.42	71.05	135-140	27.29	733.1
145.0	73.21	78.17	79.70	79.51	70.14	72.76	71.16	71.30	140-145	24.82	758.0
150.0	74.49	77.96	79.87	78.96	70.40	72.13	70.91	71.18	145-150	21.97	779.9
155.0	75.00	77.35	78.33	77.65	70.40	71.28	70.31	70.98	150-155	18.80	798.7
160.0	75.26	76.48	76.80	76.19	69.63	70.07	69.71	70.60	155-160	15.44	814.2
165.0	75.00	75.66	75.26	75.00	68.60	69.12	69.12	69.74	160-165	11.98	826.2
170.0	74.23	74.69	74.41	74.05	67.83	68.43	68.52	68.83	165-170	8.523	834.7
175.0	73.21	73.64	73.55	73.15	67.32	67.65	67.92	68.00	170-175	5.082	839.8
180.0	72.70	72.70	72.70	72.70	67.32	67.32	67.32	67.32	175-180	1.683	841.5
DEG	LUMINOUS INTENSITY:cd								UNIT:lm		

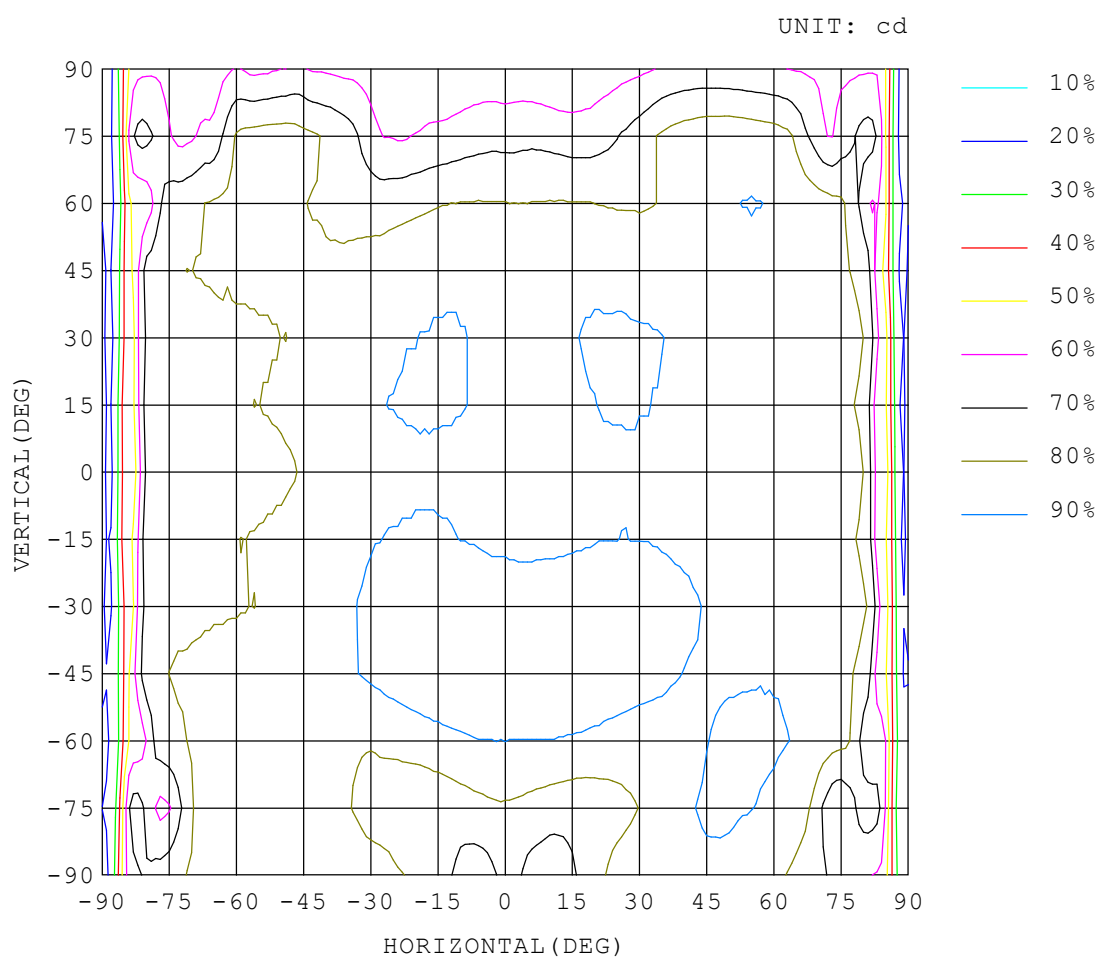
Test System:HOPOO HPG1900
 Temperature:25.3DEG
 Operators:
 Test Date:2022年03月26日

Test Set: 10.0deg/s B-Beta (TYPE B)
 Humidity:65.0%
 Test Distance:16.000 m
 Remarks:

ISOCANDELA DIAGRAM

Report number:

MANUFACTURER:	Address:	
NAME: 500450	TYPE:	WEIGHT:
SPECIFICATION:	DIMENSION:	SERIAL No.:



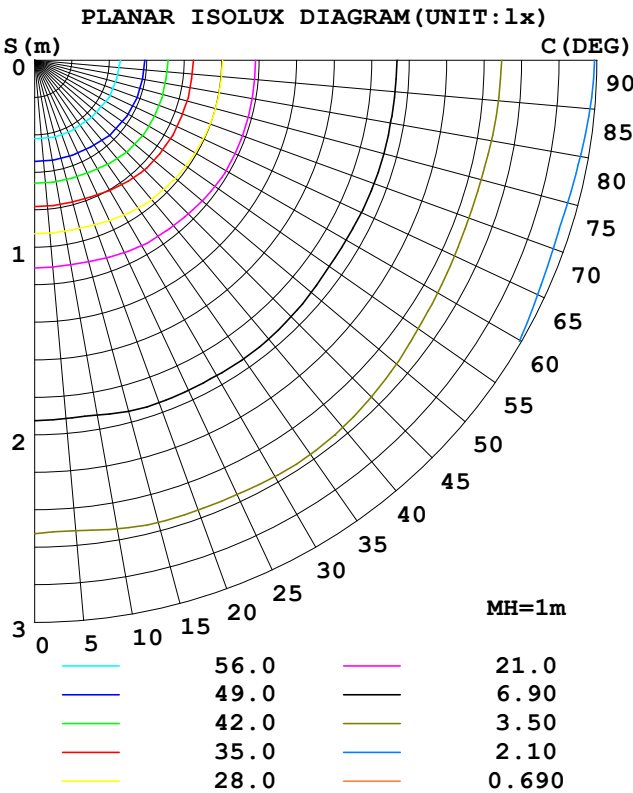
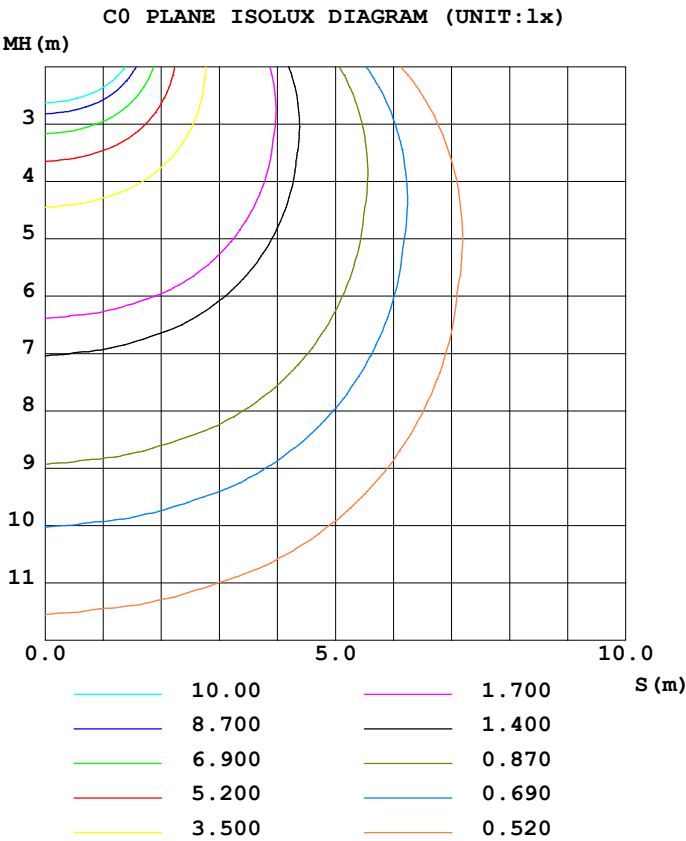
Test System:HOPOO HPG1900
Temperature:25.3DEG
Operators:
Test Date:2022年03月26日

Test Set: 10.0deg/s B-Beta (TYPE B)
Humidity:65.0%
Test Distance:16.000 m
Remarks:

ISOLUX DIAGRAM

Report number:

MANUFACTURER:	Address:	
NAME: 500450	TYPE:	WEIGHT:
SPECIFICATION:	DIMENSION:	SERIAL No.:



Test System:HOPOO HPG1900
Temperature:25.3DEG
Operators:
Test Date:2022年03月26日

Test Set: 10.0deg/s B-Beta (TYPE B)
Humidity:65.0%
Test Distance:16.000 m
Remarks:

HONGPU GONIOPHOTOMETERS SYSTEM TEST REPORT

LUMINOUS DISTRIBUTION INTENSITY DATA

Report number:

MANUFACTURER:	Address:	
NAME: 500450	TYPE:	WEIGHT:
SPECIFICATION:	DIMENSION:	SERIAL No.:

UNIT: cd

C (DEG) γ (DEG)	0	5	10	15	20	25	30	35	40	45	50	55	60	65	70
0.0	69.3	69.3	69.3	69.3	69.3	69.3	69.3	69.3	69.3	69.3	69.3	69.3	69.3	69.3	69.3
5.0	68.8	68.9	68.9	69.0	69.0	69.1	69.1	69.2	69.2	69.3	69.4	69.5	69.6	69.6	69.6
10.0	69.3	69.4	69.5	69.6	69.7	69.8	69.8	69.9	69.9	69.9	69.9	69.9	69.9	69.9	70.0
15.0	69.8	70.0	70.1	70.2	70.4	70.4	70.4	70.5	70.5	70.5	70.5	70.6	70.6	70.5	70.5
20.0	71.1	71.2	71.3	71.3	71.3	71.4	71.3	71.3	71.2	71.3	71.3	71.5	71.8	72.0	72.2
25.0	71.6	71.7	71.9	72.0	72.0	72.1	72.3	72.2	72.5	72.8	73.2	73.4	73.6	73.8	74.0
30.0	71.9	72.0	72.1	72.2	72.3	72.6	72.9	73.4	74.0	74.6	74.9	75.1	75.4	75.6	75.9
35.0	71.6	71.7	71.9	72.1	72.2	72.7	73.5	74.3	75.2	75.9	76.5	77.0	76.9	76.9	77.1
40.0	71.1	71.2	71.3	71.4	71.8	72.8	73.9	74.8	75.8	76.7	77.0	77.3	77.6	77.9	77.9
45.0	70.4	70.4	70.6	70.6	71.6	72.6	73.8	75.0	75.6	76.1	76.7	77.5	78.0	78.4	78.8
50.0	69.3	69.3	69.2	69.8	71.1	72.0	73.3	73.8	74.2	75.2	76.1	77.2	77.4	77.5	77.5
55.0	69.8	69.6	69.3	70.2	71.2	71.9	72.0	72.5	72.9	73.9	74.2	74.3	74.5	74.8	74.9
60.0	70.1	69.8	69.9	71.1	72.0	71.9	71.9	71.9	72.0	71.8	71.6	71.2	71.4	71.9	72.3
65.0	70.4	69.8	70.5	72.0	72.0	71.9	72.1	72.4	71.9	71.0	69.9	68.6	68.6	68.4	68.3
70.0	70.1	69.4	71.2	71.8	71.9	72.5	73.3	73.4	72.7	71.5	69.9	67.9	66.2	64.9	64.0
75.0	67.8	67.2	69.4	69.5	71.4	73.0	74.0	73.7	73.3	72.3	70.4	67.6	64.6	61.8	59.9
80.0	64.5	65.6	65.6	68.3	69.6	71.2	72.2	73.1	73.7	72.9	71.1	68.2	65.4	62.7	59.6
85.0	43.2	46.3	58.0	53.3	60.8	67.7	69.5	71.1	72.2	72.3	71.3	69.4	67.3	65.0	60.4
90.0	19.9	42.7	49.9	53.5	57.8	62.4	66.5	68.8	70.6	71.6	71.1	70.4	69.1	67.3	61.1
95.0	53.7	58.4	60.6	61.7	63.4	64.8	66.6	68.1	69.2	69.7	68.9	67.5	65.8	63.4	58.6
100.0	59.9	60.3	60.4	62.7	64.3	65.3	66.4	67.3	67.7	67.6	66.5	64.6	62.4	59.5	56.0
105.0	60.6	60.2	62.0	62.2	63.7	64.9	65.7	66.2	66.4	66.1	65.0	63.0	60.3	57.0	54.5
110.0	61.4	60.9	62.5	63.2	63.3	64.2	65.0	65.2	65.1	64.8	63.9	62.6	60.8	59.3	58.1
115.0	62.4	62.1	62.7	64.1	64.4	64.4	64.7	65.1	65.3	64.9	63.9	62.5	62.2	62.1	62.0
120.0	63.4	63.2	63.5	64.5	65.6	65.6	65.7	66.0	66.4	66.7	66.6	66.0	65.9	65.9	66.3
125.0	64.7	64.6	64.6	65.2	66.3	67.4	67.7	68.2	68.8	69.8	70.2	70.3	70.5	70.6	70.9
130.0	66.5	66.2	66.2	66.8	67.9	69.2	70.6	71.0	71.7	72.6	73.6	74.6	75.2	75.4	75.5
135.0	69.1	68.9	69.0	69.3	70.2	71.3	72.6	74.0	74.8	75.3	76.0	76.7	77.5	78.2	78.8
140.0	71.4	71.3	71.3	71.6	72.1	73.2	74.3	75.5	76.6	77.8	78.1	78.5	79.0	79.3	79.6
145.0	73.2	73.2	73.4	73.6	74.0	74.5	75.3	76.3	77.2	78.1	79.0	80.0	80.1	80.3	80.2
150.0	74.4	74.5	74.5	74.6	75.1	75.4	75.8	76.6	77.1	77.9	78.6	79.1	79.7	79.9	80.1
155.0	75.0	75.1	75.2	75.4	75.6	75.8	76.0	76.4	76.9	77.3	77.7	78.1	78.4	78.4	78.4
160.0	75.2	75.4	75.5	75.7	75.8	76.0	76.1	76.2	76.3	76.4	76.7	76.8	76.7	76.8	76.9
165.0	75.0	75.1	75.2	75.4	75.5	75.6	75.6	75.7	75.7	75.6	75.6	75.5	75.5	75.4	75.3
170.0	74.2	74.3	74.4	74.4	74.5	74.5	74.5	74.5	74.6	74.6	74.6	74.5	74.5	74.6	74.5
175.0	73.2	73.2	73.3	73.4	73.4	73.5	73.6	73.6	73.6	73.6	73.6	73.5	73.6	73.6	73.6
180.0	72.7	72.7	72.7	72.7	72.7	72.7	72.7	72.7	72.7	72.7	72.7	72.7	72.7	72.7	72.7

Test System:HOPOO HPG1900
Temperature:25.3DEG
Operators:
Test Date:2022年03月26日

Test Set: 10.0deg/s B-Beta (TYPE B)
Humidity:65.0%
Test Distance:16.000 m
Remarks:

HONGPU GONIOPHOTOMETERS SYSTEM TEST REPORT

LUMINOUS DISTRIBUTION INTENSITY DATA

Report number:

MANUFACTURER:	Address:	
NAME: 500450	TYPE:	WEIGHT:
SPECIFICATION:	DIMENSION:	SERIAL No.:

UNIT: cd

C (DEG) γ (DEG)	75	80	85	90	95	100	105	110	115	120	125	130	135	140	145
0.0	69.3	69.3	69.3	69.3	69.3	69.3	69.3	69.3	69.3	69.3	69.3	69.3	69.3	69.3	69.3
5.0	69.6	69.7	69.8	69.9	69.9	69.9	69.9	69.9	69.9	69.8	69.8	69.8	69.9	69.9	69.9
10.0	70.1	70.2	70.3	70.5	70.5	70.5	70.5	70.6	70.7	70.9	71.0	71.1	71.1	71.1	71.1
15.0	70.5	70.7	70.9	71.1	71.1	71.1	71.3	71.5	71.8	71.9	72.0	72.0	72.0	72.1	72.2
20.0	72.2	72.4	72.6	72.9	72.9	72.9	73.1	73.3	73.3	73.2	73.2	73.3	73.1	73.0	73.0
25.0	74.1	74.2	74.4	74.7	74.7	74.9	75.0	75.0	75.0	75.0	74.8	74.6	74.2	73.8	73.4
30.0	75.9	76.1	76.2	76.5	76.5	76.6	76.7	76.8	76.6	76.3	75.9	75.4	74.8	74.2	73.5
35.0	77.2	77.2	77.3	77.5	77.6	77.8	77.9	77.8	77.6	77.2	76.7	76.0	75.1	74.3	73.4
40.0	78.2	78.2	78.3	78.5	78.7	78.9	78.8	78.6	78.2	77.5	76.7	75.8	75.0	73.8	72.6
45.0	79.1	79.2	79.3	79.6	79.8	80.0	79.7	79.3	78.5	77.5	76.4	75.2	73.8	72.7	71.4
50.0	77.3	77.2	77.1	77.3	77.4	77.6	77.5	77.2	77.1	76.7	75.9	74.1	72.6	70.9	69.5
55.0	74.9	74.9	74.7	75.0	74.9	74.8	74.3	73.8	73.2	72.7	72.0	71.6	71.0	69.2	68.1
60.0	72.5	72.6	72.4	72.7	72.4	71.9	71.1	70.3	69.4	68.7	68.1	68.2	68.0	67.9	67.7
65.0	68.5	68.8	69.1	69.6	69.2	68.3	67.2	66.2	65.7	65.3	64.9	65.6	66.2	66.7	67.0
70.0	64.1	64.8	65.7	66.5	65.9	64.6	63.0	62.0	62.4	63.3	64.3	65.6	66.3	66.4	66.8
75.0	59.6	60.7	62.3	63.4	62.5	60.9	58.8	58.0	59.4	61.7	64.2	66.6	68.2	68.7	68.4
80.0	57.8	57.3	59.5	61.9	59.2	58.3	58.9	58.9	60.7	62.8	65.3	67.8	69.9	71.3	70.8
85.0	56.4	54.0	56.7	60.4	55.8	55.9	59.6	60.9	63.4	65.2	67.2	68.5	68.7	70.2	70.6
90.0	55.0	50.6	54.0	58.8	52.4	53.5	60.4	62.9	66.0	67.5	68.8	68.8	67.3	68.8	69.3
95.0	54.2	52.0	55.3	59.4	54.9	54.7	58.6	60.7	63.8	66.0	68.1	69.5	69.6	71.1	71.6
100.0	53.5	53.5	56.6	60.0	57.4	55.9	56.9	58.4	61.4	64.3	67.1	70.0	71.8	73.1	72.9
105.0	53.4	55.1	57.9	60.6	60.0	57.4	55.9	57.1	60.1	63.3	66.4	69.2	71.1	72.0	72.5
110.0	57.8	59.1	61.1	62.9	62.9	61.3	60.3	60.9	62.6	64.3	66.3	68.1	69.8	70.9	72.0
115.0	62.2	63.2	64.3	65.2	65.7	65.1	64.8	64.9	65.4	65.7	66.3	68.1	69.9	71.4	72.4
120.0	66.7	67.1	67.4	67.5	68.5	68.8	69.2	69.2	69.2	69.4	69.9	71.0	72.0	72.8	73.4
125.0	71.1	71.3	71.4	71.5	72.1	72.5	73.0	73.2	73.5	73.8	74.2	74.7	75.2	74.6	74.2
130.0	75.5	75.5	75.4	75.4	75.7	76.2	76.7	77.3	77.8	78.2	78.1	77.5	76.8	76.3	75.7
135.0	79.2	79.3	79.3	79.3	79.2	79.6	79.7	79.6	79.7	79.6	79.1	78.7	78.3	77.9	77.6
140.0	79.7	79.7	79.6	79.5	79.3	79.7	79.8	79.9	80.0	80.0	80.0	79.8	79.5	79.0	78.3
145.0	80.1	80.0	79.8	79.7	79.4	79.7	79.8	80.0	80.0	80.3	80.3	80.1	79.5	79.0	78.6
150.0	80.1	80.0	79.9	79.8	79.5	79.5	79.6	79.4	79.4	79.3	79.2	79.0	78.9	78.5	78.1
155.0	78.5	78.4	78.3	78.3	78.0	77.9	78.1	78.0	77.8	77.8	77.8	77.7	77.6	77.4	77.3
160.0	76.8	76.8	76.7	76.8	76.5	76.4	76.5	76.4	76.4	76.2	76.2	76.1	76.1	76.2	76.1
165.0	75.4	75.2	75.2	75.2	74.9	74.9	74.9	75.1	75.0	75.0	75.0	74.9	75.0	74.9	74.8
170.0	74.4	74.4	74.4	74.4	74.2	74.1	74.0	74.0	74.1	74.1	74.1	74.1	74.0	74.0	73.9
175.0	73.7	73.6	73.6	73.5	73.5	73.4	73.3	73.3	73.2	73.1	73.1	73.1	73.1	73.1	73.1
180.0	72.7	72.7	72.7	72.7	72.7	72.7	72.7	72.7	72.7	72.7	72.7	72.7	72.7	72.7	72.7

Test System:HOPOO HPG1900
Temperature:25.3DEG
Operators:
Test Date:2022年03月26日

Test Set: 10.0deg/s B-Beta (TYPE B)
Humidity:65.0%
Test Distance:16.000 m
Remarks:

HONGPU GONIOPHOTOMETERS SYSTEM TEST REPORT

LUMINOUS DISTRIBUTION INTENSITY DATA

Report number:

MANUFACTURER:	Address:		
NAME: 500450	TYPE:	WEIGHT:	
SPECIFICATION:	DIMENSION:	SERIAL No.:	

UNIT: cd

C (DEG) γ (DEG)	150	155	160	165	170	175	180	185	190	195	200	205	210	215	220
0.0	69.3	69.3	69.3	69.3	69.3	69.3	69.3	69.3	69.3	69.3	69.3	69.3	69.3	69.3	69.3
5.0	70.0	70.0	70.0	69.9	69.9	69.9	69.8	69.9	69.9	70.0	70.0	70.0	70.0	70.0	70.0
10.0	71.1	71.1	71.0	70.9	70.8	70.7	70.6	70.7	70.9	71.0	71.1	71.2	71.2	71.2	71.1
15.0	72.2	72.0	71.8	71.7	71.6	71.5	71.4	71.5	71.6	71.7	71.8	72.0	72.2	72.3	72.3
20.0	72.8	72.6	72.3	72.1	71.9	71.6	71.4	71.6	71.8	72.1	72.3	72.4	72.7	72.8	72.9
25.0	72.9	72.6	72.3	71.8	71.5	71.2	70.9	71.1	71.4	71.8	72.2	72.5	72.9	73.2	73.3
30.0	73.1	72.5	71.9	71.5	70.9	70.3	69.8	70.3	70.8	71.2	71.7	72.3	72.6	72.6	72.8
35.0	72.7	71.9	71.3	70.6	70.0	69.5	69.1	69.4	69.8	70.4	71.0	71.4	71.5	71.5	72.0
40.0	71.6	70.8	70.1	69.3	68.5	67.8	67.3	67.7	68.2	68.9	69.4	69.6	69.9	70.2	70.6
45.0	70.1	69.1	68.4	67.7	66.6	65.7	65.0	65.6	66.3	67.2	67.4	67.5	68.0	68.5	69.0
50.0	68.1	67.1	66.5	66.0	65.3	64.3	63.4	64.2	65.1	65.4	65.5	65.6	65.9	66.6	67.2
55.0	67.1	66.1	65.5	65.2	64.9	63.8	62.7	63.6	64.6	64.6	64.6	64.8	65.1	65.4	65.8
60.0	66.9	66.0	64.9	64.6	64.4	63.4	62.2	63.2	64.0	63.9	64.0	64.7	65.0	65.2	65.1
65.0	67.0	66.4	65.3	64.0	63.9	63.1	61.4	62.7	63.3	63.1	64.3	65.2	65.5	65.2	64.8
70.0	66.9	66.8	66.2	64.7	63.4	63.3	60.9	62.6	62.7	63.7	65.0	65.6	65.8	65.7	65.0
75.0	67.5	66.8	66.5	65.6	63.0	62.8	60.1	62.0	62.3	64.6	65.2	65.9	66.3	66.6	66.5
80.0	69.5	67.7	66.0	64.2	63.9	60.4	58.1	59.5	62.4	62.4	61.4	61.0	66.3	67.6	68.2
85.0	69.6	68.0	65.0	52.8	53.2	46.9	35.3	41.8	49.3	51.0	47.6	50.5	59.9	58.8	58.6
90.0	68.3	66.8	65.0	61.1	57.3	45.3	20.4	34.3	47.1	45.8	42.7	42.2	48.8	46.5	48.3
95.0	71.1	70.3	69.3	67.0	63.8	65.3	41.7	59.5	60.9	63.4	61.0	63.0	62.9	60.5	59.4
100.0	72.8	72.2	70.8	69.7	70.1	67.4	60.1	62.2	64.4	65.9	66.9	69.0	69.7	70.2	69.5
105.0	72.9	73.2	72.8	72.8	70.9	71.1	64.5	66.5	66.6	68.4	68.6	68.6	68.4	68.4	68.0
110.0	72.9	73.4	73.2	72.1	71.3	71.7	65.2	66.8	66.7	67.5	68.6	68.6	68.0	67.3	66.3
115.0	73.2	73.2	72.6	71.7	71.9	71.8	65.5	66.8	67.3	67.1	67.8	68.3	68.2	67.5	66.9
120.0	72.9	73.0	72.3	72.3	72.3	72.0	66.0	66.9	67.6	67.5	67.3	67.9	68.0	68.3	68.5
125.0	73.7	72.9	72.6	72.7	72.6	72.1	66.0	66.9	67.7	67.7	67.8	68.1	68.8	69.4	70.1
130.0	75.2	74.6	73.9	73.9	73.3	72.7	66.8	67.5	68.4	69.1	69.3	69.8	70.2	70.8	71.3
135.0	76.6	76.0	75.7	75.4	74.9	74.5	68.3	69.0	69.8	70.5	70.8	70.9	71.3	71.9	72.1
140.0	77.7	77.1	76.7	76.3	76.0	75.5	69.3	69.9	70.5	71.2	71.6	71.8	72.1	72.3	72.6
145.0	78.0	77.6	77.2	76.9	76.5	76.2	70.1	70.5	71.0	71.5	72.0	72.2	72.3	72.4	72.6
150.0	77.9	77.6	77.4	77.0	76.7	76.5	70.4	70.7	71.0	71.4	71.7	72.0	72.2	72.3	72.3
155.0	77.3	77.1	76.8	76.7	76.5	76.3	70.4	70.6	70.9	71.2	71.3	71.4	71.5	71.4	71.5
160.0	76.2	76.2	76.0	75.9	75.7	75.5	69.6	69.8	70.0	70.2	70.4	70.4	70.4	70.3	70.2
165.0	74.8	74.8	74.8	74.7	74.5	74.4	68.6	68.7	68.8	68.9	68.9	69.0	69.0	69.1	69.1
170.0	73.9	73.8	73.7	73.6	73.4	73.3	67.8	67.9	68.0	68.0	68.0	68.1	68.1	68.2	68.3
175.0	73.1	73.0	72.9	72.9	72.8	72.7	67.3	67.3	67.4	67.4	67.5	67.5	67.6	67.6	67.6
180.0	72.7	72.7	72.7	72.7	72.7	72.7	67.3	67.3	67.3	67.3	67.3	67.3	67.3	67.3	67.3

Test System:HOPOO HPG1900
Temperature:25.3DEG
Operators:
Test Date:2022年03月26日

Test Set: 10.0deg/s B-Beta (TYPE B)
Humidity:65.0%
Test Distance:16.000 m
Remarks:

HONGPU GONIOPHOTOMETERS SYSTEM TEST REPORT

LUMINOUS DISTRIBUTION INTENSITY DATA

Report number:

MANUFACTURER:	Address:		
NAME: 500450	TYPE:	WEIGHT:	
SPECIFICATION:	DIMENSION:	SERIAL No.:	

UNIT: cd

C (DEG) γ (DEG)	225	230	235	240	245	250	255	260	265	270	275	280	285	290	295
0.0	69.3	69.3	69.3	69.3	69.3	69.3	69.3	69.3	69.3	69.3	69.3	69.3	69.3	69.3	69.3
5.0	70.0	70.0	70.0	70.0	70.0	70.0	70.0	70.0	70.0	70.0	69.9	69.8	69.8	69.7	69.7
10.0	71.1	71.1	71.1	71.0	70.9	70.8	70.8	70.8	70.7	70.7	70.6	70.5	70.4	70.3	70.1
15.0	72.3	72.3	72.2	72.0	72.0	71.8	71.6	71.6	71.4	71.4	71.3	71.1	70.8	70.8	70.9
20.0	73.1	73.2	73.0	72.8	72.5	72.2	72.0	71.7	71.6	71.5	71.3	71.1	71.0	71.2	71.3
25.0	73.2	73.1	73.1	73.0	72.8	72.5	72.2	71.8	71.6	71.5	71.3	71.2	71.3	71.4	71.5
30.0	72.8	72.9	72.9	73.0	73.0	72.7	72.4	72.1	71.8	71.6	71.4	71.4	71.6	71.6	71.8
35.0	72.1	72.5	72.6	72.6	72.7	72.7	72.3	72.0	71.7	71.5	71.2	71.2	71.5	71.8	72.1
40.0	71.0	71.5	71.8	72.0	72.3	72.3	72.2	71.9	71.5	71.3	71.0	71.2	71.3	71.7	72.0
45.0	69.5	70.0	70.6	71.2	71.5	71.8	71.9	71.7	71.4	71.1	70.9	71.1	71.3	71.7	71.8
50.0	68.0	68.6	69.4	69.7	69.9	70.0	69.9	69.5	69.2	69.0	68.8	69.2	69.6	70.1	70.6
55.0	66.2	66.5	66.2	66.5	66.8	67.2	67.4	67.2	67.0	66.9	66.6	67.0	67.5	67.8	68.1
60.0	64.6	64.1	63.4	63.2	63.7	64.2	64.7	64.9	64.8	64.7	64.5	64.9	65.3	65.4	65.4
65.0	63.9	62.4	61.0	59.4	59.3	59.8	60.4	60.9	61.1	61.0	61.1	61.4	61.4	61.8	62.3
70.0	64.2	62.4	59.2	55.0	54.0	54.7	55.7	56.6	57.3	57.4	57.7	57.7	57.2	57.5	59.0
75.0	65.0	62.9	58.7	51.4	48.8	49.6	51.0	52.3	53.5	53.7	54.3	54.0	53.0	53.3	56.2
80.0	64.9	61.3	56.6	49.2	46.4	46.9	47.5	48.8	50.1	50.0	50.4	49.7	48.8	49.9	52.9
85.0	57.1	54.4	51.7	47.2	44.7	44.8	44.2	45.3	46.6	46.2	46.6	45.4	44.7	46.6	49.2
90.0	49.1	47.3	46.3	44.7	43.0	42.7	40.9	41.9	43.2	42.4	42.7	41.2	40.7	43.2	45.3
95.0	57.8	54.9	52.4	49.8	47.8	47.4	46.6	47.7	48.6	47.9	48.0	46.6	45.6	46.7	47.9
100.0	66.3	62.1	58.1	54.7	52.5	52.2	52.4	53.4	54.0	53.4	53.3	52.1	50.6	50.3	50.4
105.0	66.6	64.1	61.3	58.7	57.0	56.9	58.0	59.0	59.4	58.8	58.6	57.5	55.6	54.1	53.3
110.0	65.7	64.2	62.9	61.6	60.7	60.7	61.3	61.7	61.7	61.2	61.1	60.5	59.2	58.0	57.4
115.0	66.2	65.3	65.0	64.7	64.5	64.5	64.5	64.2	63.9	63.6	63.6	63.4	62.7	62.1	61.5
120.0	68.1	67.8	67.7	67.7	67.7	67.6	67.3	66.6	66.1	66.0	66.0	66.1	65.9	65.4	64.9
125.0	70.8	70.6	70.5	70.2	70.0	69.6	69.1	68.5	67.9	67.9	67.9	68.1	68.1	67.8	67.4
130.0	71.7	72.3	72.9	72.8	72.3	71.6	70.8	70.2	69.8	69.8	69.8	70.1	70.2	70.0	69.9
135.0	72.5	72.8	72.9	73.0	72.9	72.5	72.1	71.9	71.6	71.6	71.6	71.9	71.9	71.7	71.4
140.0	72.9	72.9	72.9	72.8	72.5	72.0	71.7	71.5	71.3	71.4	71.4	71.5	71.8	71.8	71.8
145.0	72.7	72.7	72.6	72.2	71.8	71.6	71.2	71.2	70.9	71.1	71.1	71.3	71.6	71.9	72.1
150.0	72.1	72.1	71.7	71.4	71.1	71.0	70.8	70.8	70.6	70.9	70.9	71.1	71.1	71.5	71.7
155.0	71.2	71.0	70.7	70.6	70.4	70.3	70.2	70.1	70.1	70.3	70.3	70.4	70.5	70.8	70.9
160.0	70.0	69.9	69.8	69.8	69.7	69.7	69.6	69.6	69.6	69.7	69.8	69.8	69.9	70.0	70.2
165.0	69.1	69.1	69.0	69.1	69.0	69.0	69.0	69.0	69.1	69.1	69.1	69.3	69.3	69.3	69.4
170.0	68.4	68.3	68.3	68.3	68.4	68.3	68.4	68.5	68.5	68.5	68.5	68.7	68.7	68.7	68.6
175.0	67.6	67.6	67.6	67.7	67.8	67.8	67.9	67.9	67.9	67.9	67.9	68.0	68.1	68.1	68.1
180.0	67.3	67.3	67.3	67.3	67.3	67.3	67.3	67.3	67.3	67.3	67.3	67.3	67.3	67.3	67.3

Test System:HOPOO HPG1900
 Temperature:25.3DEG
 Operators:
 Test Date:2022年03月26日

Test Set: 10.0deg/s B-Beta (TYPE B)
 Humidity:65.0%
 Test Distance:16.000 m
 Remarks:

HONGPU GONIOPHOTOMETERS SYSTEM TEST REPORT

LUMINOUS DISTRIBUTION INTENSITY DATA

Report number:

MANUFACTURER:	Address:	
NAME: 500450	TYPE:	WEIGHT:
SPECIFICATION:	DIMENSION:	SERIAL No.:

UNIT: cd

C (DEG) γ (DEG)	300	305	310	315	320	325	330	335	340	345	350	355
0.0	69.3	69.3	69.3	69.3	69.3	69.3	69.3	69.3	69.3	69.3	69.3	69.3
5.0	69.7	69.6	69.5	69.4	69.3	69.2	69.2	69.1	69.0	69.0	68.9	68.9
10.0	70.0	70.1	70.1	70.0	70.0	70.0	70.0	69.9	69.8	69.7	69.6	69.4
15.0	70.9	70.9	70.9	70.8	70.7	70.6	70.5	70.5	70.5	70.3	70.2	70.0
20.0	71.4	71.4	71.4	71.6	71.5	71.5	71.5	71.5	71.5	71.5	71.4	71.3
25.0	71.6	71.8	72.0	72.2	72.4	72.5	72.6	72.5	72.3	72.2	72.0	71.8
30.0	72.1	72.4	72.7	72.9	73.0	73.0	72.9	72.8	72.6	72.5	72.2	72.0
35.0	72.5	73.0	73.1	73.1	73.2	73.0	72.8	72.7	72.4	72.2	72.0	71.8
40.0	72.4	72.7	72.9	73.3	73.1	73.0	72.7	72.2	71.9	71.5	71.3	71.2
45.0	72.1	72.1	72.1	72.2	72.4	72.5	72.1	71.6	71.1	70.6	70.5	70.3
50.0	70.9	71.2	70.9	70.9	70.9	71.1	71.3	70.8	70.2	69.6	69.2	69.3
55.0	68.3	68.7	69.0	69.4	69.2	69.8	70.1	70.5	70.5	69.9	69.3	69.6
60.0	65.5	65.9	66.8	67.8	68.7	69.1	70.0	70.7	71.1	70.7	69.8	69.8
65.0	63.0	63.7	65.7	67.5	69.2	70.2	70.6	70.9	71.3	71.5	70.3	69.8
70.0	61.2	63.7	66.4	68.3	70.4	71.7	71.9	71.5	71.4	71.2	71.0	69.3
75.0	60.1	64.4	67.4	69.3	70.5	71.6	72.2	71.6	70.3	68.8	69.1	67.0
80.0	56.9	62.0	65.8	68.6	70.4	70.1	69.6	68.6	66.9	67.2	65.1	65.2
85.0	52.0	55.8	58.4	59.9	60.8	61.2	61.6	60.2	52.5	54.0	56.9	45.7
90.0	46.8	49.4	50.6	50.9	50.6	49.9	48.8	47.8	47.1	46.8	47.3	40.1
95.0	49.5	52.0	54.0	55.5	56.5	57.0	57.4	58.2	59.5	59.0	58.2	54.8
100.0	52.1	54.4	57.1	59.8	61.9	61.9	61.6	61.0	60.2	58.9	56.8	56.6
105.0	54.6	56.4	58.5	60.0	60.8	61.0	60.8	60.3	59.2	57.9	58.1	56.3
110.0	57.7	58.3	59.1	59.8	60.1	60.4	60.3	59.6	58.9	58.8	58.3	56.8
115.0	61.1	60.6	60.3	60.5	60.5	60.4	60.1	59.8	59.8	59.7	58.4	57.8
120.0	64.2	63.7	63.1	62.6	62.1	61.1	61.1	61.1	61.0	60.1	59.1	58.9
125.0	67.1	66.6	66.0	65.4	64.3	63.6	63.2	62.8	61.8	60.7	59.9	59.9
130.0	69.7	69.2	68.4	67.6	66.8	66.1	65.8	64.8	63.5	62.6	61.8	61.7
135.0	70.8	70.5	70.0	69.6	69.1	68.6	67.5	66.5	65.5	64.7	64.3	64.1
140.0	71.7	71.3	71.2	71.0	70.6	69.7	68.9	68.1	67.3	66.8	66.4	66.2
145.0	72.1	72.1	71.6	71.3	70.9	70.2	69.7	69.2	68.7	68.4	68.2	68.1
150.0	71.8	71.6	71.5	71.1	70.9	70.4	70.2	69.8	69.5	69.4	69.1	68.9
155.0	71.1	71.2	70.9	70.9	70.8	70.6	70.4	70.2	70.0	69.8	69.7	69.7
160.0	70.3	70.4	70.6	70.6	70.4	70.2	70.3	70.2	70.2	70.1	70.0	69.9
165.0	69.5	69.6	69.7	69.7	69.8	69.9	70.0	69.9	69.8	69.7	69.6	69.4
170.0	68.7	68.8	68.8	68.8	68.9	68.9	68.9	68.9	68.9	68.8	68.7	68.6
175.0	68.1	68.0	68.0	68.0	67.9	67.9	67.9	67.9	67.9	67.9	67.9	67.8
180.0	67.3	67.3	67.3	67.3	67.3	67.3	67.3	67.3	67.3	67.3	67.3	67.3

Test System:HOPOO HPG1900
Temperature:25.3DEG
Operators:
Test Date:2022年03月26日

Test Set: 10.0deg/s B-Beta (TYPE B)
Humidity:65.0%
Test Distance:16.000 m
Remarks: